

# Energy and Power Piping Products





## What's in Our Pipes?

- One** Centrifugal casting makes HOBAS unique, delivers major benefits.
- Two** Inherent corrosion resistance produces the longest service, a 100-year design life.
- Three** 25 years of experience with installations in most major US municipalities.
- Four** Engineering support and field service staff to assure your success.
- Five** Quality, the finest materials and sophisticated manufacturing for consistent, reliable pipes every job, every time.



# Why Pick HOBAS?

It's the Best Pipe Investment You Can Make  
*Centrifugal Casting Is the Difference*

## Exactly What Are HOBAS Pipes?

HOBAS pipes are unique - centrifugally cast, fiberglass reinforced, polymer mortar (CCFRPM). They are strong, light and inherently corrosion resistant with consistent dimensions, smooth surfaces and high stiffness. Sophisticated HOBAS manufacturing means you get real value, the lowest life cycle cost in the industry for both new installations and rehabilitation.

## Long-Life

HOBAS pipe is inherently corrosion resistant because of the materials that go into it. Design service life is up to 100 years and more. HOBAS meets or exceeds ASTM standards as measured in sewer pipe accelerated aging tests. Results project that HOBAS pipe will last many thousands of years, unequaled by any other pipe.



## Consistent Quality for Performance You Can Count On

Most U.S. municipalities have HOBAS pipe in their systems and the use of HOBAS pipe in the USA is expanding faster than ever after more than 25 years of reliable performance. More than 8,000 miles of HOBAS pipe is in service around the world. The HOBAS computer controlled production process assures consistent, high quality pipes, tested to comply with applicable standards.

## Smoother Surfaces, High Flow Capacity

Precision centrifugal casting produces pipes that no other method can deliver - a dense composite with moldsmooth exterior surfaces and a glass-smooth liner that is nonporous, resilient and abrasion resistant. Combined with HOBAS thin-wall construction and resulting oversized I.D., you get the highest flow capacity available.



The HOBAS name on the pipe says you've chosen the leader in pipe technology: first choice for virtually every application and method of installation.

# Energy and Power Piping Products

HOBAS PIPE USA's Houston-based manufacturing facility has been supplying corrosion-resistant piping materials to the energy and power industry since 1987. Diameters from 18 to 126 inches are available for a wide range of applications.

## Hydroelectric Penstocks

The reasons HOBAS pipes are used worldwide in penstock and other above ground applications include gravity and pressure classes up to 250 psi, corrosion resistance, leak-free systems and UV resistance.

## Cooling Water

When it comes to cooling water projects, HOBAS pipes are chosen for several other outstanding features. Some of these are its high strength design, lightweight and easy handling. In addition, their non-porous wall and leak free gaskets lead to zero infiltration/exfiltration of the surrounding environment.

The 84-inch diameter Jackman Penstock replaced a deteriorated wood stave line.



A 90-inch diameter cooling water line installed by direct jacking.

# Power Generation

## Pipeline Rehabilitation

Flush joint configuration and high strength composite construction make HOBAS ideal for slipline and tunnel applications. Oversized inside diameters provide optimum flow recovery.

## Electrical Substation Containment Piping

Utilities use HOBAS pipes for interceptor and underground containment systems in electrical substations. On such projects, HOBAS pipes provide the benefits of chemical and heat resistance, a leak-free joining system and ease of installation.



The custom fittings and intake structure manufactured for a slipline installation at a coal-fired electric power generating plant included this 110 by 84-inch reducer. (Above) Custom made elbows and tees create manifolds for an underground containment reservoir. (Left)

# HOBAS Pipe Delivers Major Advantages in Every Demanding Application, Every Type of Installation.



## Applications and Installation Methods

This unique, high performance pipe is used for both new installations and rehabilitation. HOBAS pipe is manufactured in diameters from 18 to 126 inches and various section lengths. Other choices include multiple stiffness and pressure classes and a variety of joints and couplings. This flexibility makes HOBAS suitable for virtually every application and type of installation.

## The Product

### Multiple Applications

- Sewer Interceptors
- Potable Water
- Force Mains
- Outfalls
- Industrial Effluents
- Salt Water Lines
- Odor Control Piping
- Cooling Water

### Section Lengths

Standard 5, 10 and 20 feet

### Pressure Classes

Standard 25, 50, 100, 150, 200 and 250 psi

### Stiffness Classes

Standard 18, 36, 46 and 72 psi plus jacking pipes

## Diameters from 18 to 120 inches

18"	20"	24"	27"	28"	30"
33"	36"	41"	42"	44"	45"
48"	51"	54"	57"	60"	63"
66"	69"	72"	78"	84"	85"
90"	96"	104"	110"	120"	126"

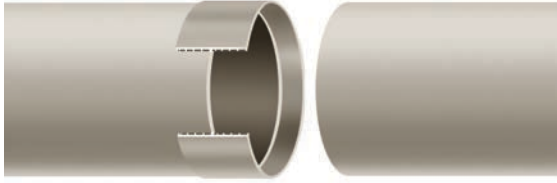
## Wall Construction:

I-Beam Principle

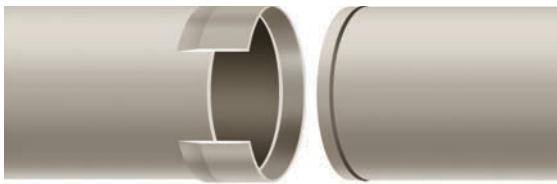


# Joints

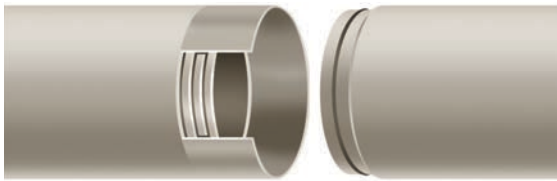
## FWC Coupling



## Low Profile Bell-Spigot



## Flush Bell-Spigot



### Joint Type

### Applications

FWC Coupling	Direct Bury and Aboveground (up to 250 psi)
Low Profile Bell-Spigot	Gravity flow sliplining
Pressure Relining	Pressure sliplining
Flush Bell-Spigot	Gravity flow direct jacking and sliplining
Flush FWC Coupling	Pressure Jacking

### Fittings

- Elbows
- Tees
- Reducers
- Laterals
- Flanges
- Nozzles
- Wyes
- Manholes

### Standard Specifications

ASTM D3262 Non-pressure Sanitary Sewers  
 ASTM D3754 Sewer Force Mains and Industrial Effluents  
 AWWA C950 Pressure Water Systems  
 AWWA M45 Fiberglass Pipe Design Manual

### Universal Features

### Universal Benefits

Inherent Corrosion Resistance	<ul style="list-style-type: none"> <li>• Long service life</li> <li>• No add-on linings or coatings</li> <li>• Hydraulics don't change</li> <li>• Lowest Life Cycle cost</li> </ul>
Oversized Smooth I.D.	<ul style="list-style-type: none"> <li>• Superior hydraulic characteristics</li> <li>• High flow capacity</li> <li>• Significant energy savings in pumped systems</li> </ul>
Lightweight	<ul style="list-style-type: none"> <li>• Less expensive equipment for handling</li> </ul>
Long Length Sections	<ul style="list-style-type: none"> <li>• Fewer joints to assemble</li> </ul>
Resilient Inner Liner	<ul style="list-style-type: none"> <li>• Excellent abrasion and crack resistance</li> </ul>
Computer Controlled Production	<ul style="list-style-type: none"> <li>• Consistent high quality</li> <li>• Reduced risk with fewer problems</li> </ul>
High Stiffness, Solid Pipe Wall with High Compressive Load Capacity	<ul style="list-style-type: none"> <li>• Easy to bury using routine methods</li> <li>• Predictable performance</li> <li>• Easily handles deep covers</li> <li>• Long drives routine in sliplining and jacking</li> </ul>
Gasket-Sealed, Push-Together Joints	<ul style="list-style-type: none"> <li>• Fast, fool-proof assembly</li> <li>• No bonding agents, bolts or welding needed</li> </ul>
Leak-free Joints	<ul style="list-style-type: none"> <li>• Zero infiltration, lower treatment costs</li> <li>• No ground water pollution</li> </ul>
Smooth, Dimensionally Consistent O.D.	<ul style="list-style-type: none"> <li>• Field length adjustments easy – pipe may be cut anywhere along length and assembled with gasketed joint</li> <li>• Lowest jacking loads</li> </ul>
Easy to Cut, Mold, Miter, Cast or Laminate	<ul style="list-style-type: none"> <li>• Accommodates any fitting angle</li> <li>• May be field fabricated, modified or repaired</li> </ul>





### Energy & Power Piping Products

- Inherent corrosion resistance
- High stiffness design
- Smooth interior surface
- Oversized inside diameters
- Leak free systems



**HOBAS Pipe USA**  
1413 E. Richey Road  
Houston, Texas 77073  
Tel: (281) 821-2200  
[www.hobaspipe.com](http://www.hobaspipe.com)